



ERGONOMIC  
VACUUM  
LIFTERS

# UNIMOVE HIGHLIGHTS

The Industry Standard in vacuum lifting applications

## INNOVATIVE FIRSTS

- **Standard Stainless-Steel Construction**  
Assures durability regardless of plant environment
- **Heavy Duty, Enclosed Power Units**  
Protects expensive components while offering dependable quiet operation
- **Patented Progressive Control Valve**  
Self cleaning and Teflon coated for a smooth operation
- **Safety Yellow Rhino Tube™ Lift Tube**  
The most appropriate color for a moving system in the workplace
- **Operator Adjustable Control Handle**  
Ergonomically designed adjustable controls



## PRODUCT HIGHLIGHTS

- **Automatic Balance Control**  
Balances any load at any chosen height without operator having to adjust controls
- **USDA Approved**  
Stainless steel control head and filter housing along with inert resin lift tube for wash-down areas
- **Combination Vacuum/Mechanical Attachments**  
Unique solutions to unusual handling problems
- **360° Ball Bearing Mounted Top Swivel**  
For effortless movement with airtight integrity. This feature is critical to allow continuous movements throughout the work area
- **Made In USA**  
UniMove is the original US manufacturer of ergonomic vacuum tube lifters
- **Local Dealer Network**  
UniMove Dealers are experienced in servicing vacuum lifting systems, and the overhead crane systems needed to complement the vacuum lifting systems



# VACUUM TUBE LIFTERS

Move Goods Weighing up to 900 lbs. Quickly and Easily

## APPLICATION

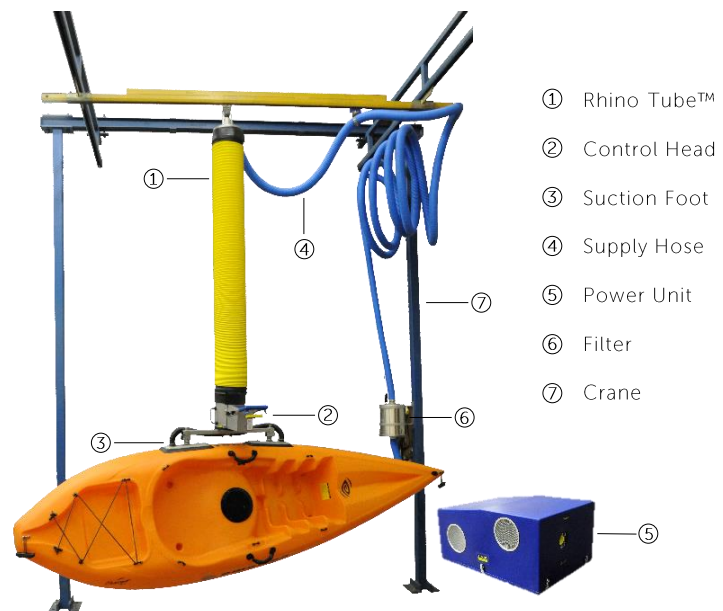
- Fast and frequent lifting and moving of workpieces weighing up to 900 lbs.
- Handling goods such as cardboard boxes, bags, bales, barrels, buckets, jugs, rolls, food products, sheets, stone & cement, and other various raw materials through finished goods

## PRODUCT HIGHLIGHTS

- Increased productivity thanks to reduced handling and loading times
- Secure, damage-free gripping by using vacuum
- Minimization of downtime due to employee injury
- Only one person for handling

## DESIGN AND FUNCTION

The lifting unit, operating unit, vacuum grippers and vacuum pump on the vacuum tube lifter can be configured according to customer specifications. The UniMove is characterized by its lifting tube, which contracts and extends when lifting and lowering the load. The large effective suction area confers a safe holding of the workpiece. UniMove also offers a comprehensive range of accessories and spare parts.



The entire system and its individual parts

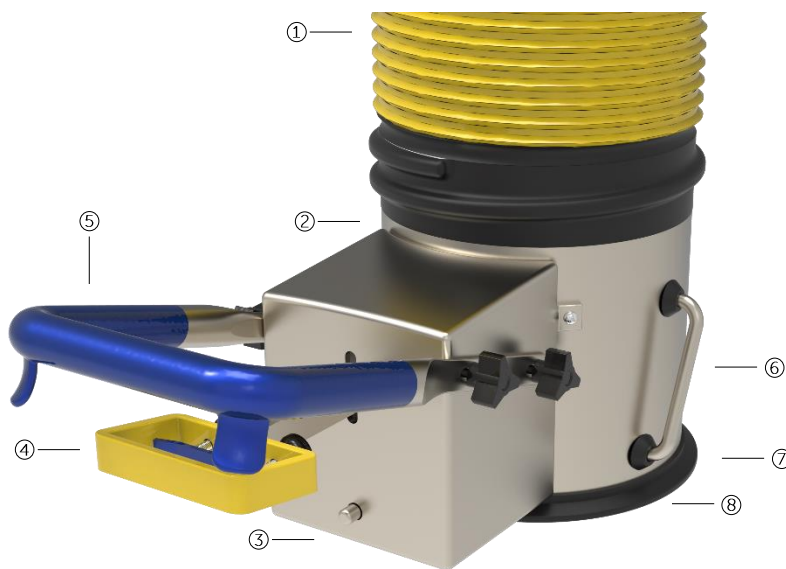
## SPECIFICATIONS

UniMove's unmatched experience allows us to offer the most advanced lifting system available. UniMove's vacuum lifters provides the highest lifting capabilities, superior quality and the versatility to respond with unique solutions to the most difficult to handle items.

UniMove Model	Max Lift (lbs.)		Tube Size	Vacuum ("Hg)	Max Lift Capacity (lbs.)									
	Non-Porous	Porous			100	200	300	400	500	600	700	800	900	1000
CM450	90	70	5"	10 to 12	Porous >>>									
CM500	140	110	5"	16 to 18	>>>>>									
CM470	175	140	7"	10 to 12	>>>>>>>									
CM700	240	190	7"	16 to 18	>>>>>>>>>									
CM750	300	225	7"	18 to 20	>>>>>>>>>>>									
CM1000	500	Contact Us	(2) 7"	16 to 18	>>>>>>>>>>>>>									
CM1400	600	Contact Us	(2) 7"	18 to 20	>>>>>>>>>>>>>>>									
CM3000	900	Contact Us	(3) 7"	18 to 20	>>>>>>>>>>>>>>>>>>>									

# VACUUM LIFTER OVERVIEW

Move Goods Weighing up to 900 lbs. Quickly and Easily



- ① Rhino Tube™ Lift Tube
- ② Automatic balance control
- ③ All stainless-steel construction
- ④ One-hand control for lifting, lowering and releasing the load
- ⑤ Ergonomic control handle with non-slip elements
- ⑥ Continuous 360° rotation
- ⑦ Quick-change adapter for fast, tool-free gripper change
- ⑧ Vacuum grippers, adapted to the workpiece

## CAPABILITIES

- UniMove allows your operators to productively and effortlessly move any object in the workplace
- Holds and gently lowers loads during power failures
- Easy lateral movement using light weight overhead bridge cranes which can cover extensive work areas
- Unmatched capability to handle highly porous, flexible and unusual surfaces
- Applications requiring vacuum, mechanical or combined function attachments. Controlled horizontal vertical movements
- Video capabilities to communicate proposed solutions for unusual applications
- Overnight parts available

## CONTROLS

Beyond the ergonomic advantages of easily moving loads, the UniMove incorporates the most current ergonomic design criteria throughout the unit to minimize operator effort in repetitive tasks. These design details include:

- Cushioned control surfaces to absorb vibration and temperature changes
- Easy adjust-ability to accommodate all hand sizes
- Straight hand position to minimize wrist rotation
- Specifically designed hand rest distributes forces evenly across operator's palm
- Thumb rests to eliminate uncomfortable pinch grip
- Effortless ball bearing top rotation
- Naturally angled hand grips
- Control design naturally positions load safely away from operator's body

# WHICH UNIMOVE IS RIGHT FOR YOU?

Move Goods Weighing up to 900 lbs. Quickly and Easily



**SINGLE TUBE LIFTER**

For loads up to 300 lbs. and porous loads up to 225 lbs.



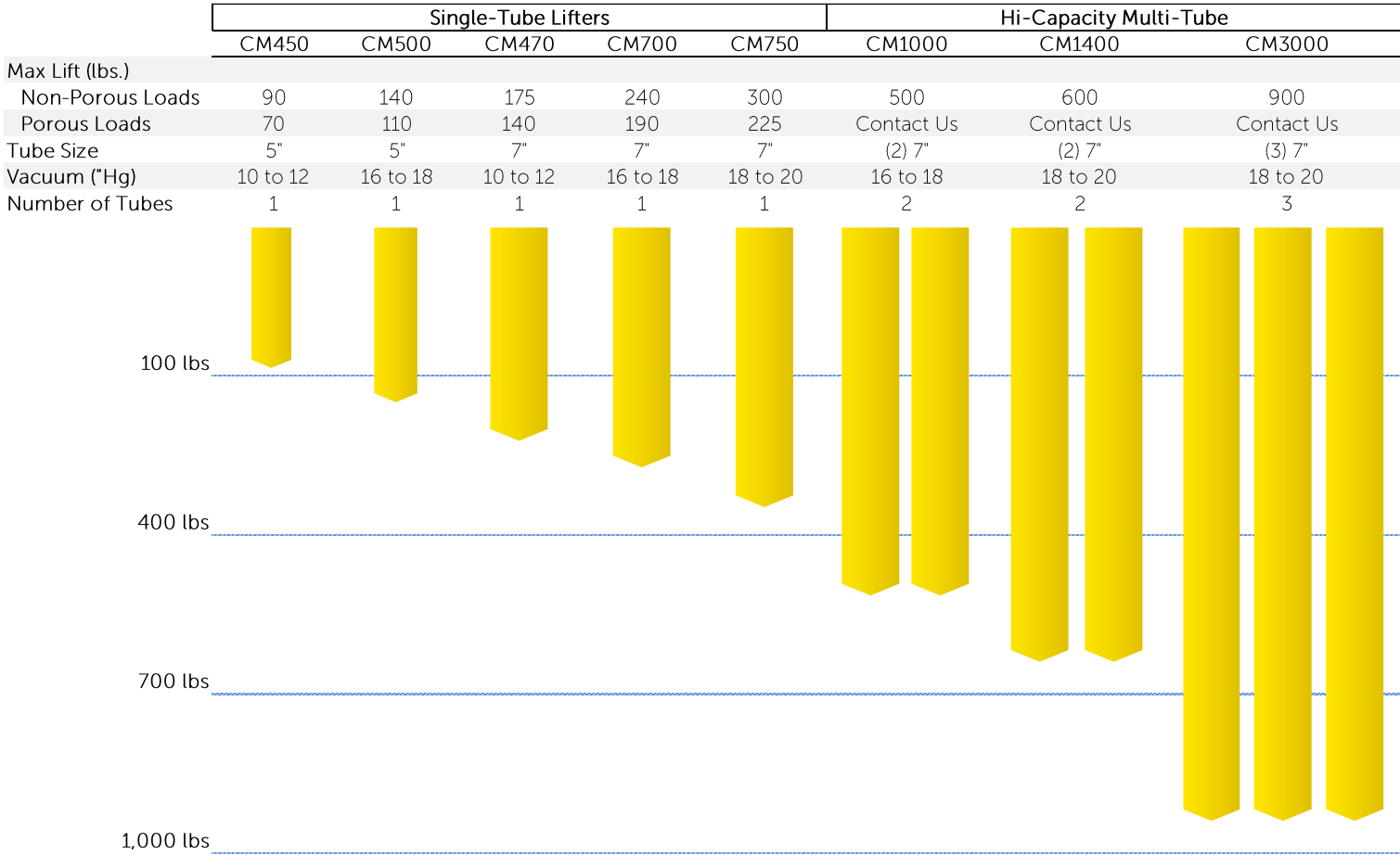
**DUAL-TUBE LIFTER**

For loads up to 650 lbs.



**THREE-TUBE LIFTER**

For loads up to 900 lbs.



# APPLICATIONS

Move Goods Weighing up to 900 lbs. Quickly and Easily

Versatility is key: UniMove offers the correct suction feet for virtually any application. With the quick-change adapter the gripper can be changed quickly and easily.



## BOXES

For all types of boxes and cartons - open or sealed, placed on a pallet or high up on a shelf



## BAGS & SACKS

For all types of material, such as paper, plastic and woven bags and sacks



## SHEETS

For sheets of wood, metal, glass and plastic - easily lift rotate and tilt big sheets.



## FURNITURE

For easy movement of bulky furniture, cabinets, works in progress and finished goods



## PAILS

For pails filled with chemicals, paint, food or beverage products



## FINISHED GOODS

For large or small, round or flat, metal or plastic goods



## JUGS & CONTAINERS

For all types of containers, lifting them one by one, or several at the same time



## ROLLS

For efficient workflow and ergonomic handling of rolls



## DRUMS

For lifting drums or barrels of various sizes, tilt to empty contents, or simply transport your drums without effort



## CRATES & CARTONS

For ergonomic handling of crates and cartons with full balance and 360° control



## APPLIANCES

For easy handling of heavy and large appliances and machines



## BALES & BUNDLES

For efficient handling of bales and bundles



# ATTACHMENTS

Move Goods Weighing up to 900 lbs. Quickly and Easily

Versatility is key: UniMove offers the correct suction feet for virtually any application. With the quick-change adapter the gripper can be changed quickly and easily.



## DOUBLE ROUND

For goods requiring additional lifting capabilities such as cardboard boxes or sheets



## EXTENDED WIDTH

For large cardboard boxes, wooden boards and other flat workpieces.



## ROUND VACUUM CUP

For compact goods such as cardboard boxes, barrels, buckets, jugs, cabinets or stone slabs.



## BAG FOOT

For paper and plastic bags, raw rubber bails and shrink-wrapped packages.



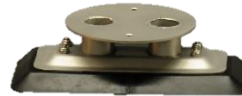
## DOUBLE RECTANGULAR

For stapled, glued, strapped or open cardboard boxes as well as small wooden boards.



## MULTI-CUP

For lifting several workpieces at once or varied load surface area



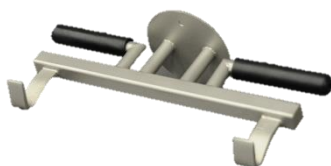
## RECTANGULAR

For all types of loads requiring a smaller surface area



## ANGLE ADAPTER

For ergonomically adjusting the angle of the suction foot and load



## SUSPENSION HOOKS

For mechanical suspension of buckets, jugs and other workpieces with a point from which to hang.



## SIDE GRAB

For loads requiring vertical side lifting



## PALLET LIFTER

For easy handling of pallets



## CUSTOM ATTACHMENT

Custom designed suction feet and attachments for unique lifting applications

# VACUUM TUBE CONFIGURATIONS

UniMove's Rhino Tube™ available in standard and hi-compression formats

The vacuum tube lifter can be configured specifically based on the requirements of each individual application due to its modular design. The technical data varies depending on the configuration and on the vacuum gripper chosen.

## Vacuum Pump

- Pump with 10 to 20"Hg

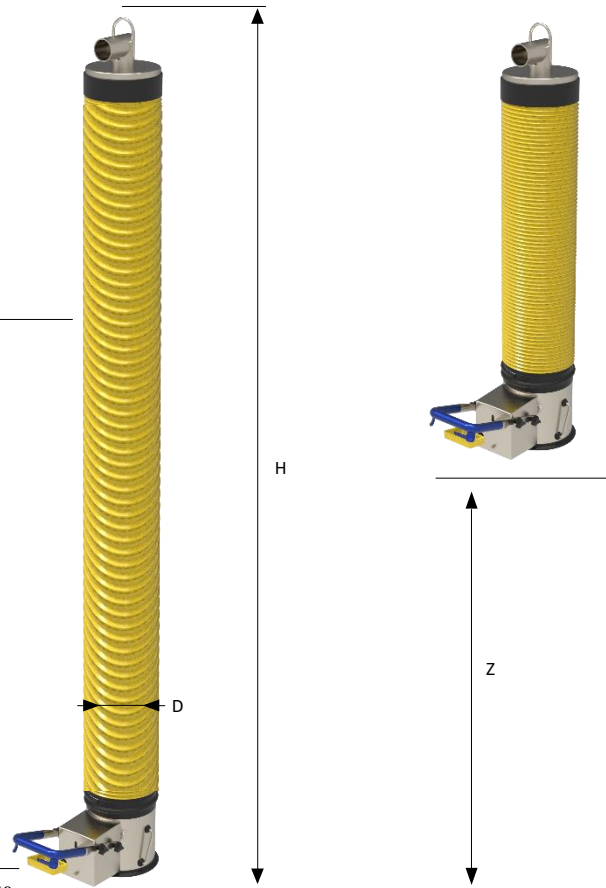
## Lift Tube

- Diameter (D) 5" or 7"

# RHINOTUBE

## Vacuum Control Head

- Standard and custom suction feet arrangements



Extended Length (H)*	Compressed Length	Compression Ratio	Max Lifting Stroke (Z)	Hi-Compression Tube	Lift Tube Length (in.)										
					20	40	60	80	100	120	140	160	180	200	
96" (8')	29 "	3.31	67 "		Compression Range										
96" (8')	22 "	4.31	74 "	✓											
108" (9')	32 "	3.38	76 "												
108" (9')	23 "	4.65	85 "	✓											
120" (10')	35 "	3.43	85 "												
120" (10')	26 "	4.62	94 "	✓											
132" (11')	39 "	3.38	93 "												
168" (14')	50 "	3.36	118 "												

Other sizes available upon request

\*Vacuum suction foot attachment not included (total height = H + height of the suction foot attachment)



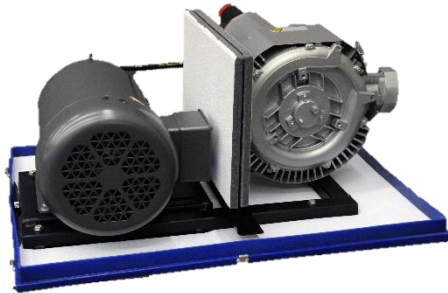
# VACUUM PUMPS AND ACCESSORIES

UniMove's hi-capacity power unit delivers the highest vacuum and air flow levels in the industry

## OVERVIEW

- The enclosed, pulley driven power units operate at >5,000 rpm. This speed on the hi-capacity compressors is nearly 50% greater than a direct drive power unit operating at 3450 rpm. The end result is far greater capability to compensate for air loss in highly porous loads.
- All Power Units operate at approximately 72 – 75 dB. To reduce this sound level, hi-temp exhaust hose can be clamped to Outlet/Exhaust pipe and directed away from the operating area.
- Exhaust on Direct Drive Power Unit can be as shown or positioned parallel to the inlet pipe below the motor.

### BELT-DRIVEN POWER UNIT



### DIRECT DRIVE POWER UNIT



UniMove Model	Vacuum Pump		Vacuum ("Hg)	Vacuum ("Hg)									
	Direct Drive	Belt Drive		2	4	6	8	10	12	14	16	18	20
CM450	x		10 to 12	VACUUM RANGE									
CM500		x	16 to 18										
CM470	x		10 to 12										
CM700		x	16 to 18										
CM750		x	18 to 20										
CM1000		x	16 to 18										
CM1400		x	18 to 20										
CM3000		x	18 to 20										



### SAFE & SOUND

The enclosure box reduces the sound of the vacuum generator and protects it from external contamination.



### DOCKING STATION

The docking station can be used to store the control head when not in use in order to protect the lift tube and vacuum grippers.



### FILTERS & HOUSING

Proprietary filters featuring high efficient paper rated at 10 microns. Stainless steel and powder coated filter housings available.



### SCREEN INSERTS

For effective lifting of porous loads of varying fill



SALES@UNIMOVE.COM



UNIMOVE.COM



1145-C LITTLE GAP RD, PALMERTON, PA 18071

